

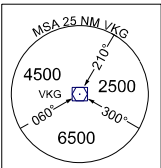
STANDARD RADAR DEPARTURE

TRANSITION ALTITUDE
11 000 FT

TWR - 118.1 (P) 121.7 (S)	ACC - 134.5(P) 125.35(S)
APP - 120.2 (P) 123.85 (S)	SMC - 121.9 ATIS - 128.4

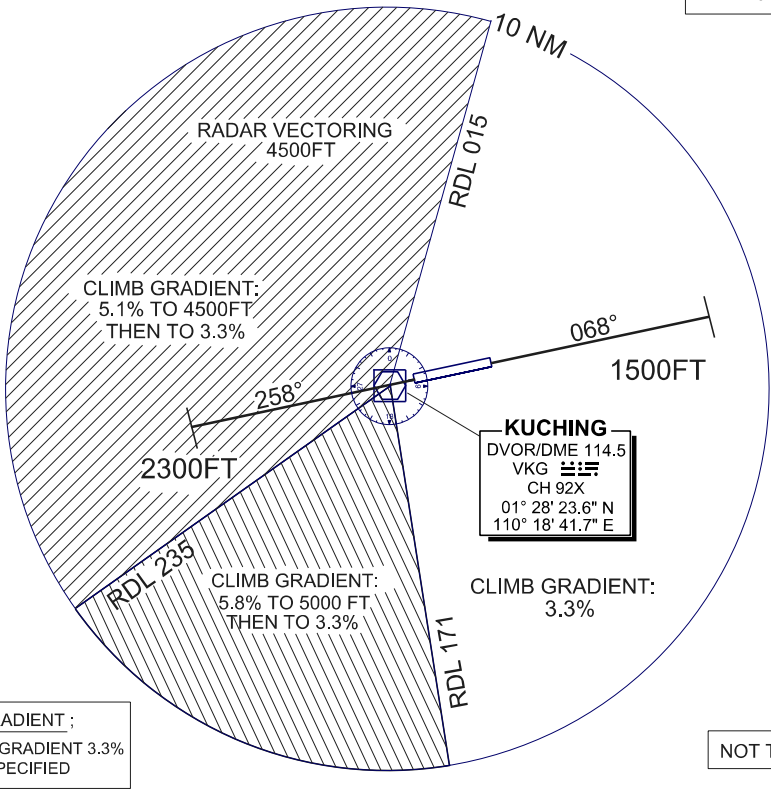
KUCHING / KUCHING (WBGG)
RWY 25/07

ELEV, ALT, HGT IN FT
DIST IN NM
BRG ARE MAG
VAR 0° E (2017)



CAUTION:
USE RECOMMENDED CLIMB GRADIENT
FROM LIFT-OFF IF ASSIGNED HEADING WILL
TAKE AIRCRAFT INTO HATCHED SECTOR

NOTE:
ASSIGNED HEADING AND
LEVEL WILL BE ISSUED
WITH THE TAKE OFF
CLEARANCE



CLIMB GRADIENT ;
MINIMUM CLIMB GRADIENT 3.3%
UNLESS SPECIFIED

STANDARD RADAR DEPARTURES
KUCHING RADAR ONE DEPARTURE

RWY 25

- TRACK HEADING 258°
- AFTER PASSING 2300FT OR ABOVE, TURN TO ASSIGNED RADAR HEADING
- CONTACT APPROACH AIRBORNE
ADVICE : DIRECTION OF TURN AND ASSGNED HEADING
LEVEL PASSING TO NEAREST 100FT ASSIGNED LEVEL

RWY 07

- TRACK HEADING 068°
- AFTER PASSING 1500FT OR ABOVE, TURN TO ASSIGNED RADAR HEADING
- CONTACT APPROACH AIRBORNE
ADVICE : DIRECTION OF TURN AND ASSGNED HEADING
LEVEL PASSING TO NEAREST 100FT ASSIGNED LEVEL

RATE OF CLIMB IN FT/MIN

GROUND SPEED (KT)	120	130	140	150	160	170	180	190	200	220	240	260	280	300
GRADIENT	3.3%	401	434	468	502	535	569	602	635	669	736	803	869	1003
	5.1%	620	671	723	775	826	878	930	981	1033	1136	1240	1342	1446
	5.8%	705	764	822	881	940	998	1057	1116	1175	1292	1410	1527	1645

VERTICAL RESTRICTIONS

ADHERE TO VERTICAL RESTRICTIONS eg 1500 FT = NOT BELOW 1500 FT ON CLIMB UNLESS SPECIFICALLY SPECIFIED BY ATC

COMMUNICATIONS FAILURE:

- IMMEDIATELY SQUAWK 7600
- MAINTAIN ASSIGNED HEADING - CLIMB TO MSA OR LAST ASSIGNED LEVEL IF HIGHER
- MAINTAIN MSA OR ASSIGNED LEVEL, AS APPLICABLE, FOR 2 MINUTES
- THEN CLIMB TO FLIGHT PLANNED LEVEL AND INTERCEPT FLIGHT PLANNED TRACK (AS AMENDED BY ATC, IF APPLICABLE)

CHANGES : CHANGE COORDINATES FOR KUCHING DVOR/DME