

## STANDARD DEPARTURE CHART INSTRUMENT (SID) - ICAO

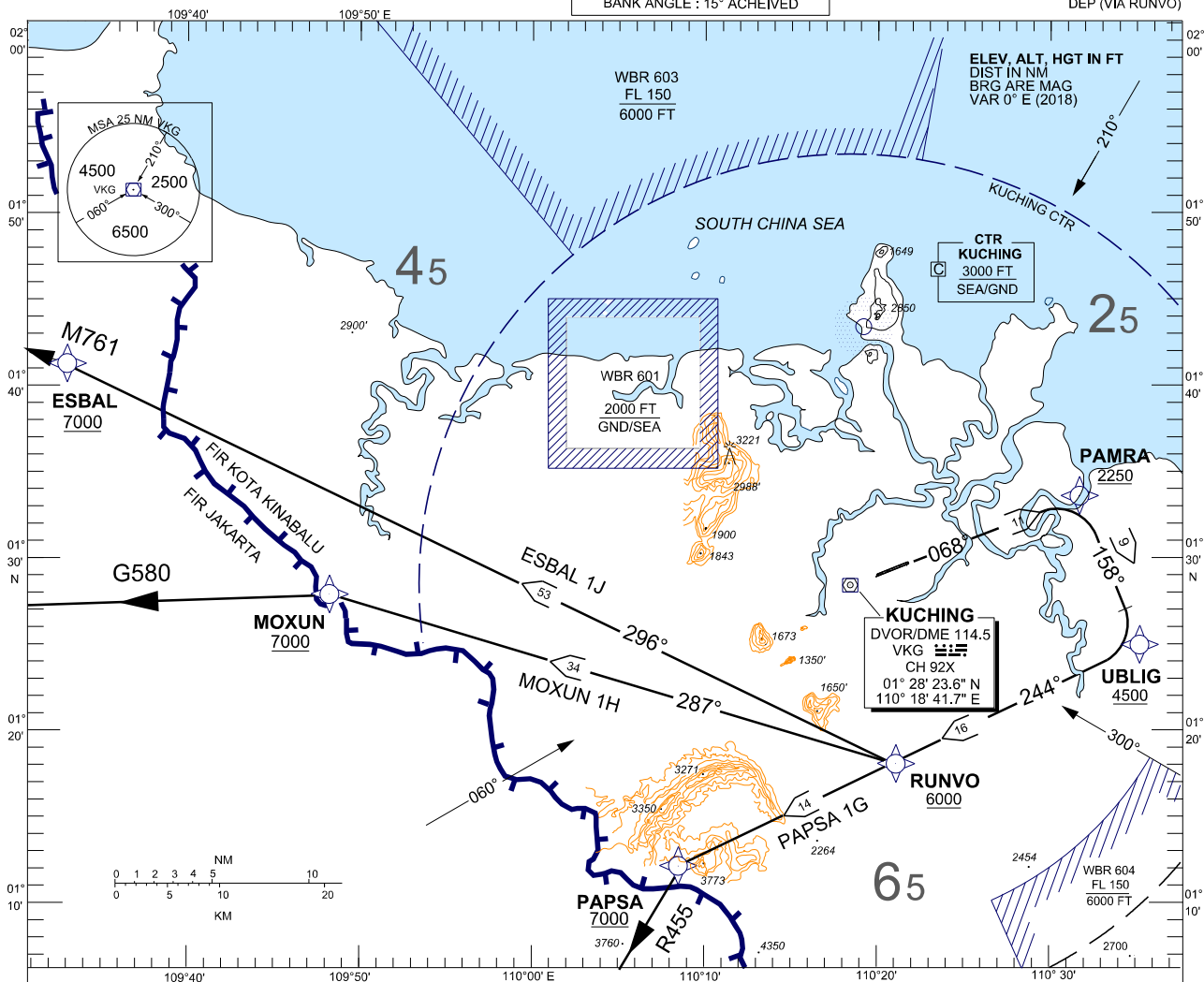
TRANSITION ALTITUDE  
11,000 FT

TWR - 118.1 (P) 121.7 (S)	ACC - 134.5(P) 125.35 (S)
APP - 120.2 (P) 123.85 (S)	SMC - 121.9 ATIS - 128.4
BANK ANGLE : 15° ACHEIVED	

**KUCHING / KUCHING (WBGG)**

RWY 07 [ RNAV ]

PAPSA 1G    MOXUN 1H    ESBAL 1J  
DEP (VIA RUNVO)



## RWY 07 (RIGHT TURN)

CLIMB ON TRACK TO PAMRA, THEN TURN RIGHT.

## PAPSA ONE GOLF DEPARTURE

FOR PAPSA ONE GOLF

TRACK VIA UBLIG, THEN TRACK (VIA RUNVO) TO PAPSA

## MOXUN ONE HOTEL DEPARTURE

FOR MOXUN ONE HOTEL

TRACK VIA UBLIG, THEN TRACK VIA RUNVO TO MOXUN

**ESBAL ONE JULIET DEPARTURE**

FOR ESBAL ONE JULIET

TRACK VIA UBLIG, THEN TRACK VIA RUNVO TO ESBAL

**VERTICAL RESTRICTIONS :**

ADHERE TO VERTICAL RESTRICTIONS eg . 7000 = NOT BELOW 7000 FT ON CLIMB UNLESS SPECIFICALLY CANCELLED BY ATC

**COMMUNICATION FAILURE :**

- SQUAWK 7600
- IF UNDER PILOT NAVIGATION, MAINTAIN LAST ASSIGNED LEVEL FOR 3 MINUTES, IF NO ONWARD CLEARANCE IS RECEIVED, SUBSEQUENTLY CLIMB TO COMPLY WITH SID.
- IF UNDER RADAR VECTURING : MAINTAIN VECTOR FOR 2 MINUTES, IF BELOW MSA, CLIMB TO MSA, THEN TRACK TO INTERCEPT CLEARED OR PREVIOUSLY ASSIGNED SID TO DESTINATION

CHANGES : CHANGE IGEVU TO ESBAL