

**STANDARD DEPARTURE CHART  
INSTRUMENT (SID) - ICAO**

BANK ANGLE : 15° ACHIEVED

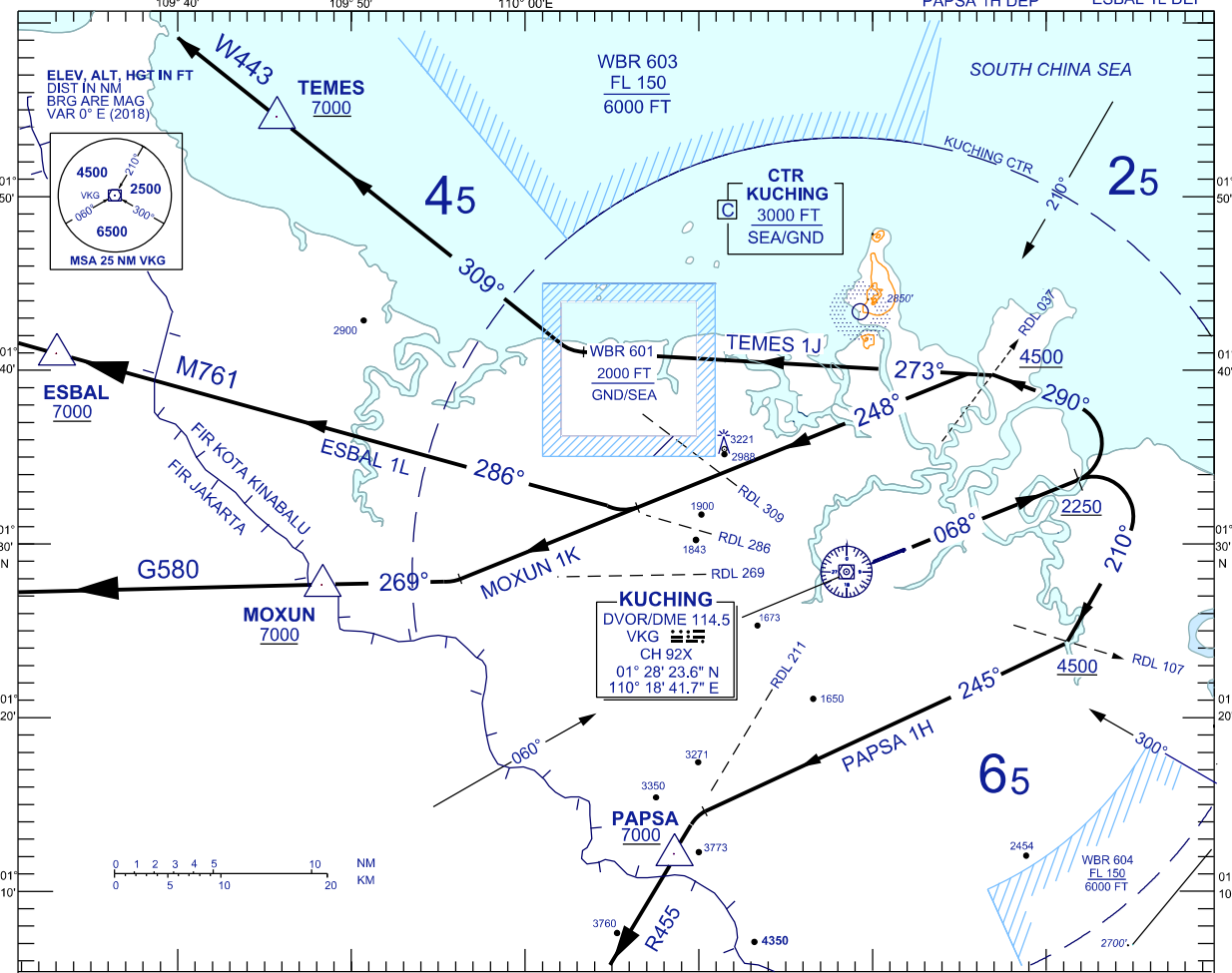
TRANSITION ALTITUDE  
11,000 FT

TWR 118.1 (P) SMC 121.9  
121.7 (S) ATIS 128.4  
APP 120.2 (P) FIS 134.75  
123.85 (S)  
ACC 134.5 (P)  
125.35 (S)

**KUCHING (WBGG)  
RWY 07**

MOXUN 1K DEP  
PAPSA 1H DEP

TEMES 1J DEP  
ESBAL 1L DEP



**RWY 07 (RIGHT/ LEFT TURN)**

CLIMB ON TRACK 068°. AT/ABOVE 2250 FEET,

**FOR TEMES**

TRACK 290°. ON CROSSING RDL 037, TURN LEFT, TRACK 273° TO INTERCEPT RDL 309 TO TEMES

**FOR ESBAL**

TRACK 290°. ON CROSSING RDL 037, TURN LEFT TRACK 248° TO INTERCEPT RDL 286 TO ESBAL

**FOR MOXUN**

TRACK 290°. ON CROSSING RDL 037, TURN LEFT TRACK 248° TO INTERCEPT RDL 269 TO MOXUN

**FOR PAPSA**

TURN RIGHT, TRACK 210°. ON CROSSING RDL 107, TRACK 245° TO INTERCEPT RDL 211 TO PAPSA

**VERTICAL RESTRICTIONS :**

ADHERE TO VERTICAL RESTRICTIONS eg . 7000 = NOT BELOW 7000 FT ON CLIMB UNLESS SPECIFICALLY CANCELLED BY ATC

**COMMUNICATION FAILURE :**

- SQUAWK 7600
- IF UNDER PILOT NAVIGATION, MAINTAIN LAST ASSIGNED LEVEL FOR 3 MINUTES, IF NO ONWARD CLEARANCE IS RECEIVED, SUBSEQUENTLY CLIMB TO COMPLY WITH SID.
- IF UNDER RADAR VECTORED : MAINTAIN VECTOR FOR 2 MINUTES, IF BELOW MSA, CLIMB TO MSA, THEN TRACK TO INTERCEPT CLEARED OR PREVIOUSLY ASSIGNED SID TO DESTINATION

CHANGES : CHANGE IGEVU TO ESBAL